



METEDGE ENGINEERING PRIVATE LIMITED

INTEGRATED SOLUTION & TECHNOLOGIES FOR ENGINEERING

CONTENTS

ABOUT US

OUR POLICY

BOARD OF DIRECTORS

ORGANISATIONAL CHART

PLANT LAYOUT & CAPACITY

LIST OF EQUIPMENTS

ACCREDITIONS

GOVERNMENT APPROVALS

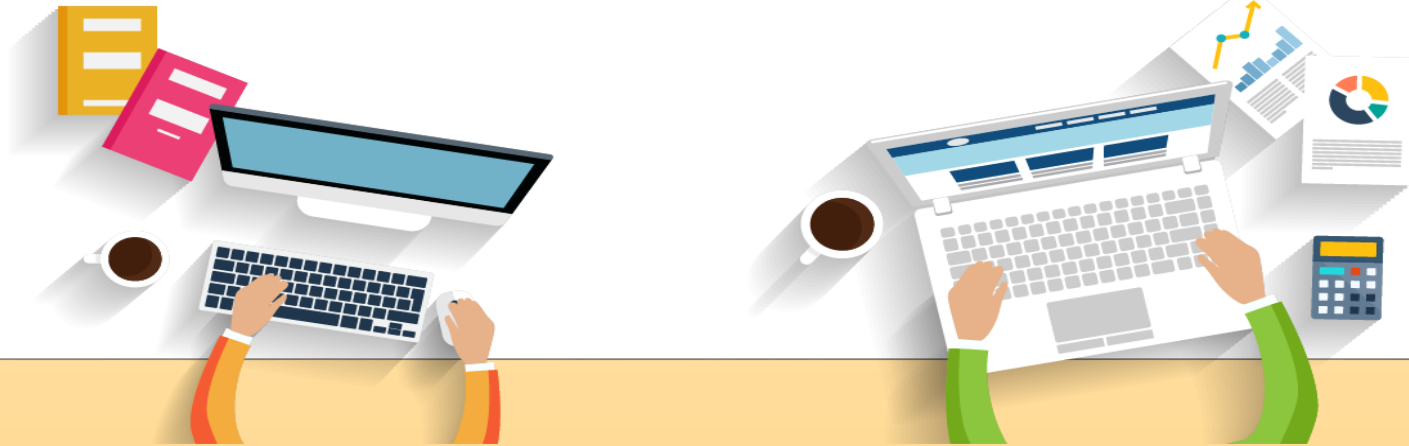
MAJOR CLIENTS

PROJECT PORTFOLIOS

RATINGS

RECOGNITIONS

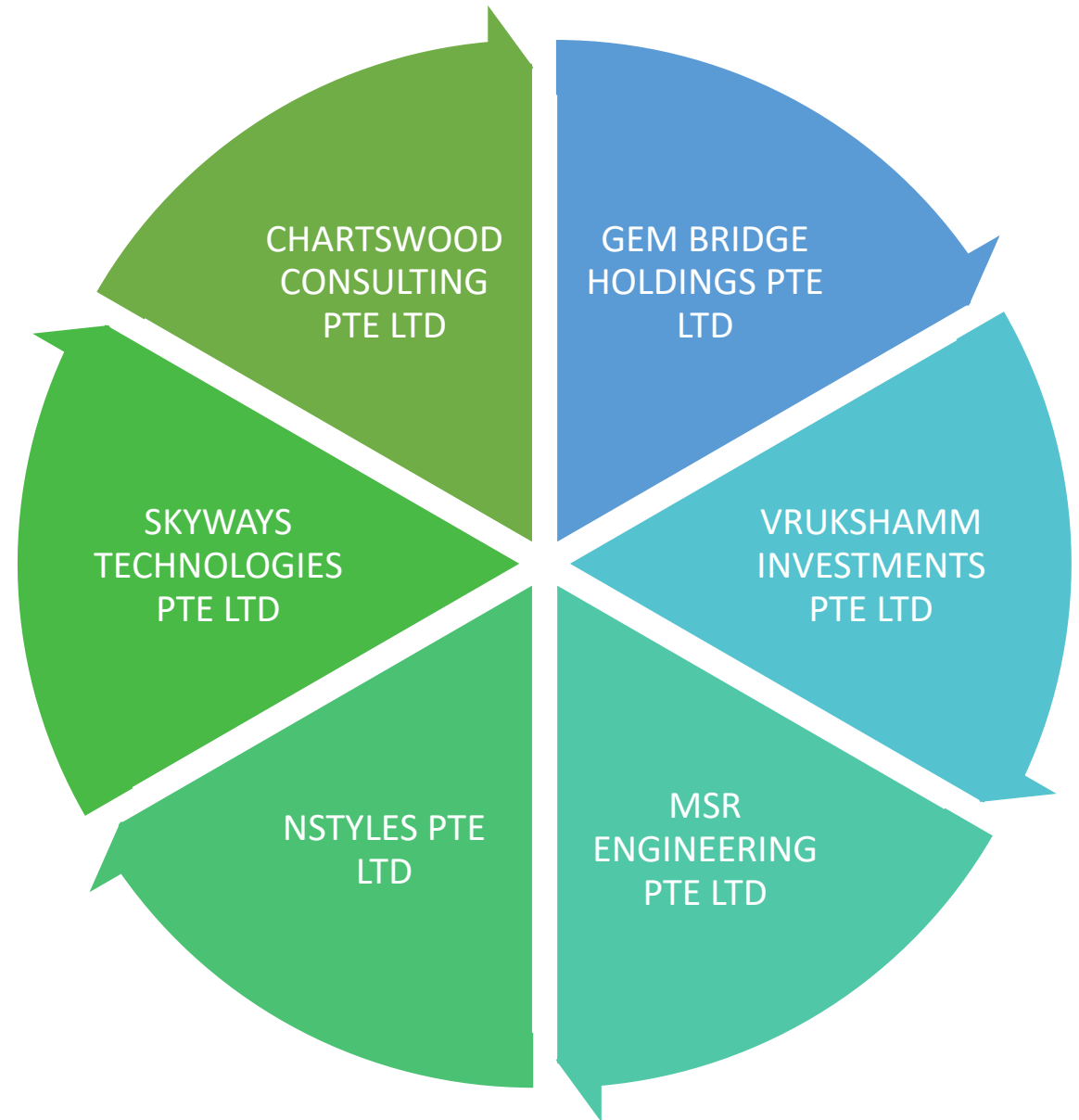
ABOUT US

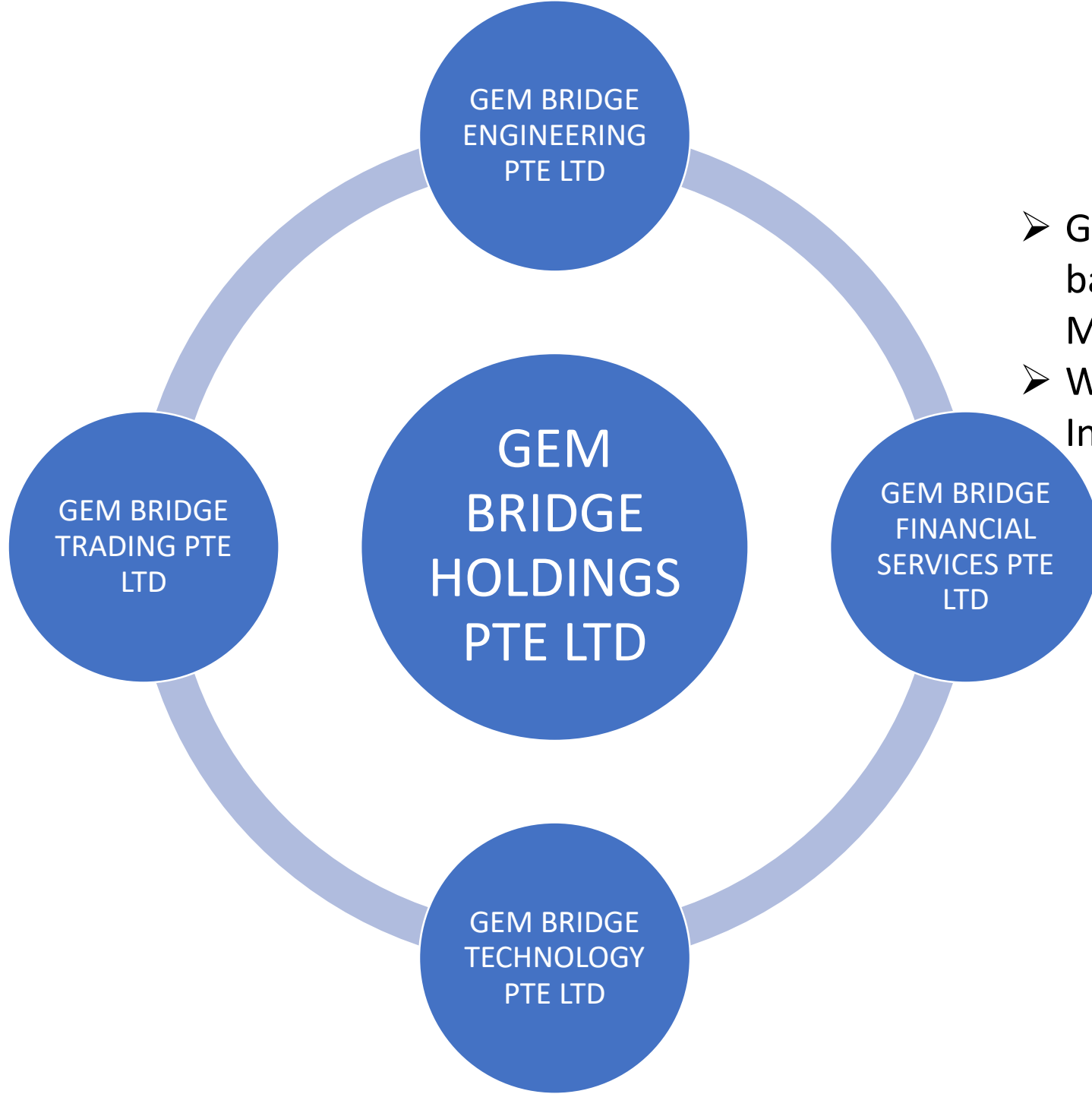


Established Since 1969; Acquired In 2018

With Over 45 Yrs. Of Experience In Providing Heavy Engineering Services, We have Established Track Records, Successfully Completing Numerous Projects Till date.

OUR SINGAPORE GROUP OF COMPANIES





- Gembridge Holdings Pte Ltd with a strong base and financial capability to handle Multiple Domains
- We are keen on working with our partners in India - a part of our Board of Advisory.

Gem Bridge

GEM BRIDGE HOLDINGS PTE LTD

GEM BRIDGE ENGINEERING PTE LTD

GEM BRIDGE FINANCIAL SERVICES PTE LTD

GEM BRIDGE TRADING PTE LTD

GEM BRIDGE TECHNOLOGY PTE LTD

VRUKSHAMM INVESTMENTS PTE LTD

- Vrukshamm Investments Pte Ltd is our Online Commodity Trading Company with a Notional Trade value for quarter ending September crossing \$40m USD



MSR ENGINEERING PTE LTD

- Singapore based M&E Contractor registered in BCA with Level 3
- M S R ENGINEERING PTE LTD has a substantial number of personnel within the skilled workforce and a management team with over 10 years of related working experience



N STYLE PTE LTD

- We offer Instrumentation Solutions in Power systems and Process control in Oil & Gas , Chemical Industries
- Our Specialized Team is highly capable in providing solutions in Process and Industrial Plant Engineering Design Consulting Services with strong presence in South East Asia including Indonesia Singapore Brunei and Malaysia



SKYWAYS TECHNOLOGIES PTE LTD

- We offer IT Consulting Web based Solutions in Software as a Service Model
- We outsource projects from North America and Singapore to our channel partners across India.



CHARTSWOOD CONSULTING PTE LTD

- Incorporating Companies in SG
- Acting as Corporate Secretary
- Accounting
- Auditing
- Financial Services
- Mergers & Acquisitions
- Due Diligence
- Business Analytics



OUR GROUP COMPANIES IN SINGAPORE



Gem Bridge



OUR POLICY

OUR MISSION:

“To Provide reliable Timing accurate cost Effective and quality specialized Engineering Services that meets our customers Expectations”.

OUR VISION:

“To build trusted relationships and serve our clients through integrity, honesty, hard work and accountability in a collaborative, solution-oriented environment.”.

OUR CORE VALUES:

“Commitment, Quality and Efficiency “

BOARD OF DIRECTORS



Mr. THIRUMURGAN
MANAGING DIRECTOR



Mr. VIJAYAKUMAR
DIRECTOR - FINANCE



Mr. SUMAN
DIRECTOR - MARKETING



Mr. MUTHU GANESHAN RAJAMANI
ADVISORY PANEL

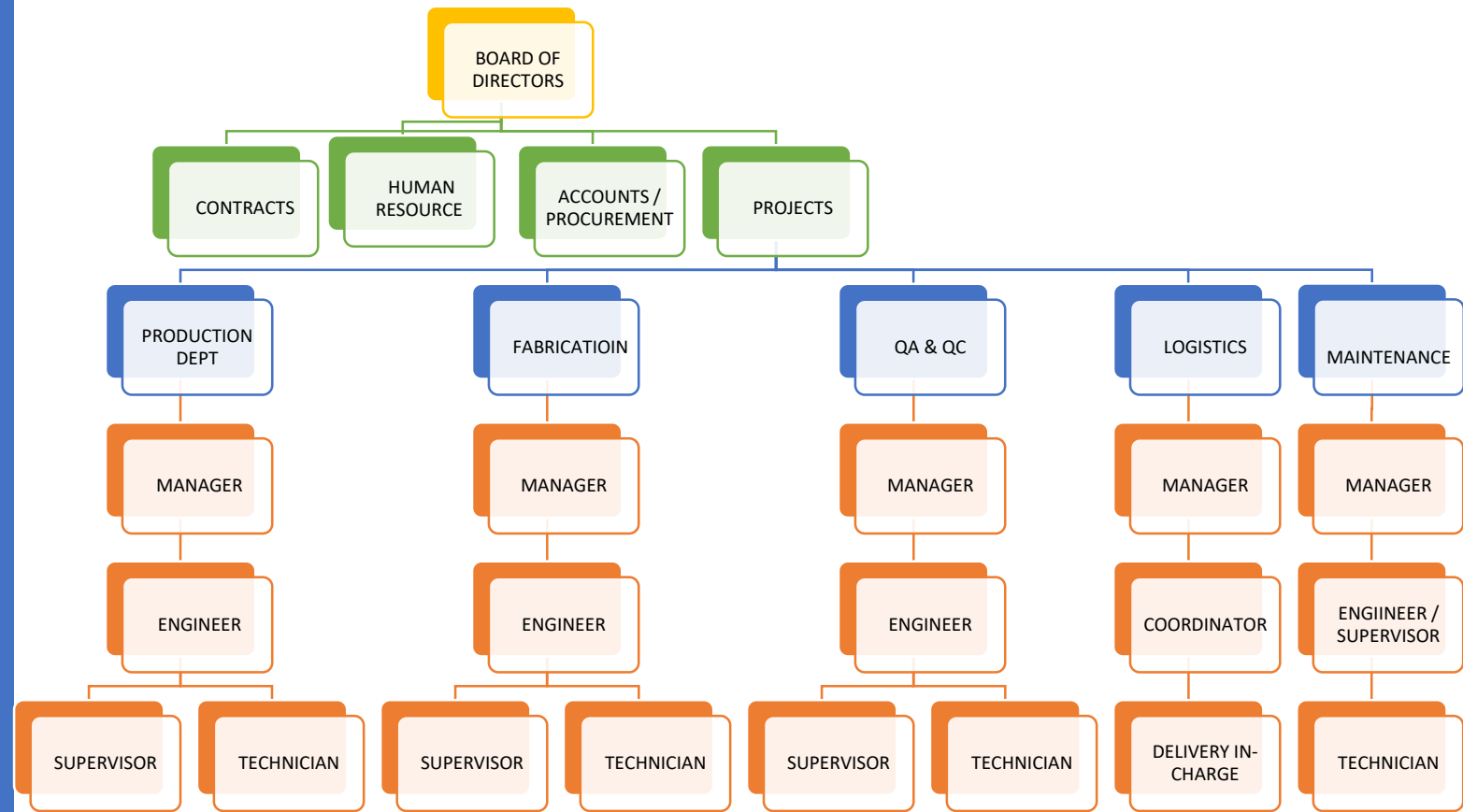


Mr. THIRUMURUGAN
ADVISORY PANEL



Mr. BALAKRISHNAN
ADVISORY PANEL

ORGANISATIONAL CHART



PLANT LAYOUT AND CAPACITY

- ❖ Located at SF NO. 306/2A1, 2A2, 2A3, Mathur Industrial Colony with a total Land span of 6.9 Acres.
- ❖ With a Operating Capacity of 500 Metric tones, We are Equiped with all necessary Equipments and storage Facilities.

EMCEE ENGINEERING WORKS UNIT II

	AREA IN ACRES	COST PER ACRE	
LAND	6.55	25000000	163750000
BUILDING			74871887
AMENITIES			8680550
ASSETVALUE			247302437
PROJECTS IN PIPELINE AND PROFITABILITY			23500000
TOTAL MARKET VALUATION			270802437
MARKETABILITY @95% AS VALUATION			257262315.2

LIST OF EQUIPMENTS

S NO	DESCRIPTION OF MACHINE	CAPACITY	QTY	MAKE	LOCATION	REMARKS
I PIPE BENDING MACHINE						
1	65 NCX Tube Bending MACHINE Max OD: Dia 65.0; Min OD: Dia 10.0	R 300 mm	1 No	ELECTRO PNEUMATIC	BAY - 1	
2	65 CNCX Booster Benders 1D Machine with split type die for bend R65 with hydraulic actuator Max OD & Radius: Dia 63.5; Min OD & Radius: Dia 10.0(Normal); 25.0(Booster)	R 76.5mm	1 No	ELECTRO PNEUMATIC	OUTER SHED (Near BAY - 1)	
3	80 CNCX Tube Bending Machine Max OD & Radius: Dia 65.0; Min OD & Radius: Dia 10.0;	R 400 mm	1 No	ELECTRO PNEUMATIC	BAY - 1	
4	100 NCX Tube Bending Machine Max OD: Dia 114; Min OD: Dia 38;	R 500 mm	1 No	HYDRO DYNAMICS	BAY - 1	
II PANEL PROCESSING MACHINE						
1	PANEL PROCESSING MACHINE WITH 4 TORCH Gantry Length : 24 Meter X Width - 3 Meter	400 AMPS (4 Nos)	1 No	ESAB	BAY -1	
2	Fin Flat De-coiling & Calibration Machine	12.5 to 102 mm	1 No	PENTA	BAY -1	
III WELDING FACILITIES						
1	WELDING INVERTER WITH TIG TORCH	400 AMPS	25 Nos	L & T	BAY -1 (10 Nos) BAY -2 (10 Nos) BAY -3 (5 Nos)	
2	WELDING INVERTER WITH TIG TORCH	220 AMPS	4 Nos	APS	BAY -1	
3	STUD WELDING MACHINE	160W	1 No.	GENESIS	PORTABLE	
4	AUTO WELDING MACHINE (SAW)	1000 AMPS	4 Nos	ADOR & WARPP	BAY -1 BAY -2	
5	ELECTRODE DRYING OVEN (BOX)	500°C	3 Nos	HARIDAS	STORE	
6	ELECTRODE DRYING OVEN portable	250°C	12 Nos	HARIDAS	BAY -1 (2 Nos) BAY -2 (6 Nos) BAY -3 (2 Nos)	
IV HYDRO PRESSURE TEST						
1	HYDRO PUMP MOTORISED	400 KG/cm ²	4 Nos	BMK HIRONISHA	PORTABLE	
2	PRESSURE GAUGE	0-700 Kg/cm ²	2 Nos	WAARI	-	
3	SPONGE TEST - AIR COMPRESSOR (1000 Litre)	30 HP	1 Nos	ELGI	COMPRESSOR ROOM	
V HANDLING FACILITIES						
1	EOT CRANE WITH ELECTRIC HOIST	30 MT	2 Nos	MEGACRANE	BAY - 3	
2	EOT CRANE WITH ELECTRIC HOIST	25 MT	2 Nos	SIGMA	BAY - 2	
3	EOT CRANE WITH ELECTRIC HOIST	10 MT	3 Nos	SIGMA	BAY -1	
4	MOBILE CRANE	12 Ton	1 No	ESCORT	-	
VI PAINTING INSTRUMENTS						
1	PAINTING SPRAY GUN	1 PINT	10 Nos	PILOT	-	
2	PAINTING COMPRESSOR (250 LITRE)	10HP	2 Nos	ELGI	OUTER YARD	

LIST OF EQUIPMENTS

S NO	DESCRIPTION OF MACHINE	CAPACITY	QTY	MAKE	LOCATION	REMARKS
VII INSPECTION INSTRUMENTS						
1	STEEL TAP	30 Meter	1 No	TAJIMA	Production Shop	
	STEEL TAP	20 Meter	1 No.	TAJIMA		
	STEEL TAP	5 Meter	1 No.	TAJIMA		
	STEEL TAP	3 Meter	2 Nos	TAJIMA		
2	VERNIER	300 mm	1 No	MITUTOYO		
3	'D' METER	MP-200L	1 No	PULSECHO		
4	COAT METER	600 Micron	1 No	AJA		
5	WELDING FILLET GAUGES	2 – 40 mm	3 Nos	-		
6	MPI MACHINE		1 No.	-		
VIII DRILLING FACILITIES						
1	RADIAL DRILLING MACHINE (Arm Length: 2000mm) Spindle Capacity: Dia 65mm Max Bore Dia: 300mm	∅ 65mm	1 No	BATLIBOI	OUTER SHED (Near BAY – 1)	
2	HORIZONTAL BORING MACHINE Bed Length: 1.5 Meter; Head Height: 800mm; Chuck Dia: 500mm Bed Cross Length: 910mm	-	1 No	KARAM	BAY - 1	
3	LATHE Spindle Capacity: Dia 88.9mm Max Dia:500mm; Center Length: 1900mm	9 Feet	1 No	OMEGA	BAY - 3	
4	LATHE Spindle Capacity: Dia 104mm Max Dia:1200mm; Center Length: 2500mm	11 FEET	1 No	PMW	BAY - 3	
5	COLUMN DRILLING MACHINE Motor: 2 HP Cap: up to 25 mm	-	2 Nos	SAMPAT	OUTER BAY	
6	MAGNETIC DRILLING MACHINE with MAGNETIC BASE Speed: 280 RPM; Max Deep: 38mm	31 MM	3 Nos	RALLIWOLF	PORTABLE	
7	BROACH CUTTING MACHINE POWER: 1800 WATT; 80-420 RPM	50 MM	2 Nos	BROACH CUTTER	PORTABLE	
IX BEND / WARPAGE REMOVER						
1	HYDRAULIC PRESS WITH MOTORISED	500 MT	1 No	BMK	PORTABLE	
2	HYDRAULIC PRESS WITH MOTORISED	300 MT	1 No	BMK	PORTABLE	
3	JIM SCREW MANUAL OPERATED	5 MT	2 Nos	SELF	PORTABLE	
X CUTTING FACILITIES						
1	BAND SAW MACHINE	∅ 180 mm	1 No.	LENOX	PORTABLE	
2	MOTORISED PIPE CUTTING MACHINE	5HP	10 Nos	OWN MAKE	PORTABLE	
3	TUBE CUTTING MACHINE	-	1 No.	DEWALT	PORTABLE	
4	HAND GAS CUTTING TORCH WITH HOSE	-	6 Nos	ESAB	PORTABLE	
5	PUG CUTTING MACHINE WITH HOSE	-	4 Nos	ESAB	PORTABLE	
6	AIR PLASMA CUTTING MACHINE	-	1 No.	ADOR	PORTABLE	
XI GRINDING FACILITIES						
1	PORTABLE ANGLE GRINDER	7 "	16 Nos	KPT	PORTABLE	
2	PORTABLE ANGLE GRINDER	4"	5 Nos	HITACHI	PORTABLE	
3	PORTABLE ANGLE GRINDER	GQ 4"	18 Nos	RALIWOLF	PORTABLE	
4	PORTABLE ANGLE GRINDER	7 "	8 Nos	RALIWOLF	PORTABLE	
5	PORTABLE E.P.MACHINE (ID BORE) Min ∅ 38.1 x 8.8 ; Max ∅ 88.9 x 4.5	∅ 88.9MM	29 Nos	RALIWOLF	PORTABLE	
6	PIPE BEVELING MACHINE	∅ 275 mm	1 No	AOTAI	PORTABLE	



DNV BUSINESS ASSURANCE MANAGEMENT SYSTEM CERTIFICATE

Certificate No. 162663-2014-AQ-IND-RvA

This is to certify that

EMCEE ENGINEERING WORKS UNIT II

at

S.F. No. 306 / 2A1, 2A2, 2A3, Mandaiyur Village - 622 515, Mathur PO,
Pudukkottai District, Tamil Nadu, INDIA

has been found to conform to the Quality Management System Standard:

ISO 9001:2008

This certificate is valid for the following scope:

**MANUFACTURE OF FABRICATED STRUCTURALS AND COMPONENTS FOR
HEAVY ENGINEERING, HEAT EXCHANGERS & PRESSURE PARTS FOR BOILERS**

Initial Certification date:
30 August 2011

This Certificate is valid until:
29 August 2017

*The audit has been performed under the
supervision of:*

Nagarajan Krishnan
Lead Auditor

Place and date of issue:
Chennai, 28 August 2014

for the Accredited Unit:
DET NORSKE VERITAS CERTIFICATION B.V.,
THE NETHERLANDS



Sivadasan Madiyath
Management Representative

Lack of fulfillment of conditions as set out in the Certification Agreement & the annexure to this certificate may render this Certificate invalid.



GOVERNMENT APPROVALS

BHEL

NUCLEAR POWER PLANTS

INDIAN RAILWAYS

THERMAL POWER PLANTS

GOVERNMENT INFRA-STRUCTURAL
PROJECTS

MAJOR CLIENTS



GAIL (India) Limited



सेल SAIL

स्टील अथॉरिटी ऑफ इण्डिया लिमिटेड
STEEL AUTHORITY OF INDIA LIMITED



Oil and Natural Gas Corporation Ltd.



PROJECTS PORTFOLIO – PRESSURE PARTS

GANG BEND PANEL



PROJECT : RAYALASEEMA (600MW)
LENGTH : 13236mm
WIDTH : 1778mm
WEIGHT : 2744.838KGS
SPEC : SA210 GRC
SIZE : Dia 51mm - Thk 5.6mm

ALLOY STEEL PANEL



PROJECT : LALITPUR (660MW)
LENGTH : 14115mm
WIDTH : 2226mm
WEIGHT : 5157.793KGS
SPEC : SA213 T12
SIZE : Dia 38.1mm - Thk 9.65mm

PROJECTS PORTFOLIO – PRESSURE PARTS

HOPPER PANEL



PROJECT : BARA (660MW)
LENGTH : 19168mm
WIDTH : 2214mm
WEIGHT : 5206.420KGS
SPEC : SA213 T12
SIZE : Dia 38.1mm - Thk 6.6mm

WATER WALL PANEL



PROJECT : YERAMARUS
LENGTH : 13236mm
WIDTH : 1778mm
WEIGHT : 2744.838KGS
SPEC : SA210 GRC
SIZE : Dia 51mm - Thk 5.6mm

PROJECTS PORTFOLIO – PRESSURE PARTS

UPPER VERTICAL FIN WELDED PANEL



PROJECT : LALITPUR (660MW)

UPPER VERTICAL FIN WELDED PANEL



PROJECT : LALITPUR (660MW)

FURNACE UPPER FRONT SPIRAL PANEL



PROJECT : YERAMARUS (800 MW)

SPIRAL FIN WELDED PANEL



PROJECT : BELLARY (700 MW)

WATER WALL PANEL



89HT196-11-616 DU-102, QTY: 110, WT: 1762.900

PROJECTS PORTFOLIO – PRESSURE PARTS

REHEATER COIL



PROJECT : JITPL (600MW)
LENGTH : 17723mm
WIDTH : 3247mm
WEIGHT : 3993.361KGS
SPEC : SA213 T91 , SA213TP347H , SA213 T22
SIZE : Dia 63.5mm - Thk 12.5mm

RE HEATER COIL ASSY



PROJECT : NORTH CHENNAI
LENGTH : 17723mm
WIDTH : 3247mm
WEIGHT : 3993.361KGS
SPEC : SA213 TP347H , SA213 T91 , SA213 T22
SIZE : Dia 63.5mm Thk 4.5mm , Dia 54mm Thk 4mm

PROJECTS PORTFOLIO NON-PRESSURE PARTS



CEILING GIRDER ASSY PROJECT: SHIMADRI (NTPC) WT: 250 MT



'I' - BEAM PROJECT: BPCL, KOCHI SIZE (LXWXH): 12000 x 300 x 700



CHIMNEY TRIAL ASSY PROJECT: J.K. TYRE WEIGHT : 65 MT



MAIN CEILING GIRDER PROJECT: UNCHHAHAR (NTPC) WT: 49.6 MT



'4' - COLUMN ASSY PROJECT: VINDHYACHAL (NTPC) WT: 125 MT

PROJECTS PORTFOLIO NON-PRESSURE PARTS



SS DUCT ASSY PROJECT: SAN DIEGO WT: 14 MT



GRIT INTERCEPTOR PROJECT: INGENIO PANUCO, MEXICO WT: 10.0 MT



STEEL CRATING - TBWES



TRANSITION DUCT PROJECT: SAN DIEGO WT: 7.0 MT

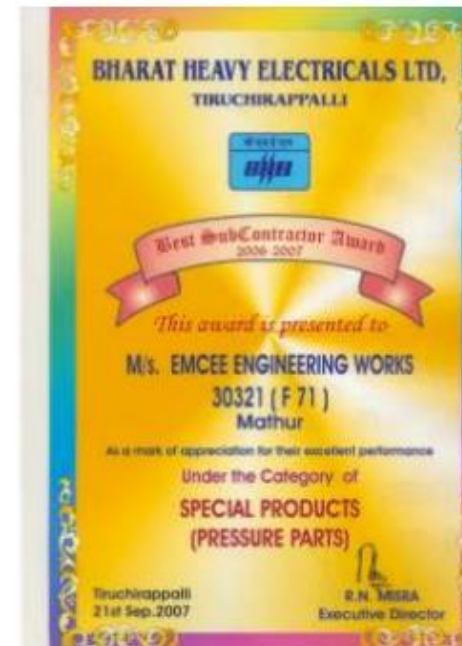


AWARDS/ RECOGNITIONS

EMCEE ENGINEERING WORKS



BEST SUB CONTRACTOR AWARD FOR YEAR 2006-2007

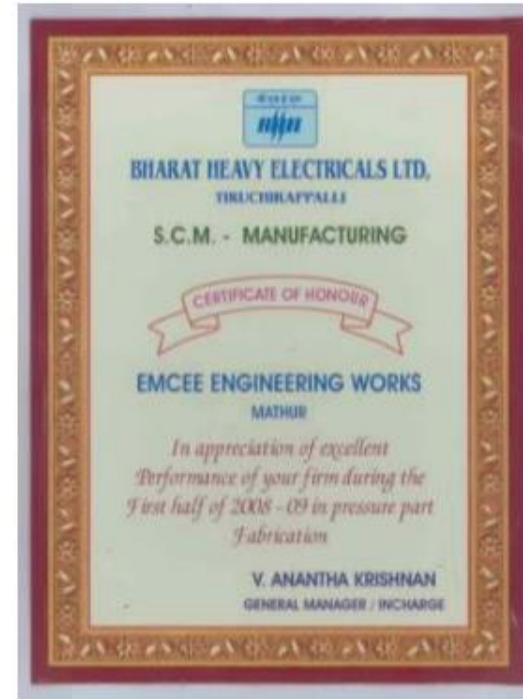


AWARDS/ RECOGNITIONS

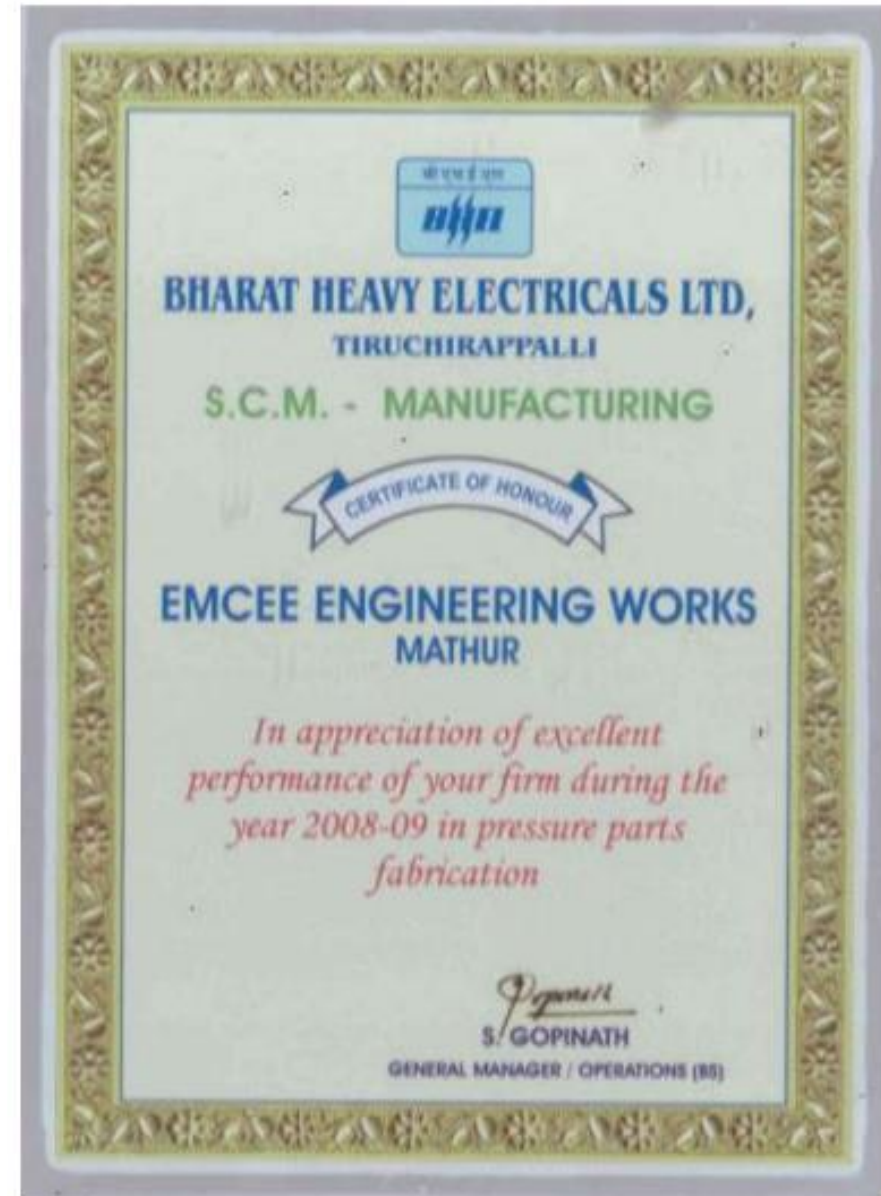
EMCEE ENGINEERING WORKS



BEST PERFORMANCE AWARD FOR YEAR 2008-2009 (FIRST HALF)



AWARDS/ RECOGNITIONS



AWARDS/ RECOGNITIONS

EMCEE ENGINEERING WORKS



BEST PERFORMANCE AWARD FOR YEAR 2011-2012

AWARDS/ RECOGNITIONS



BEST BUSINESS PARTNER AWARD FOR YEAR 2011-2012

AWARDS/ RECOGNITIONS

EMCEE ENGINEERING WORKS



BEST SAFETY STANDARDS AWARD FOR YEAR 2008-2009